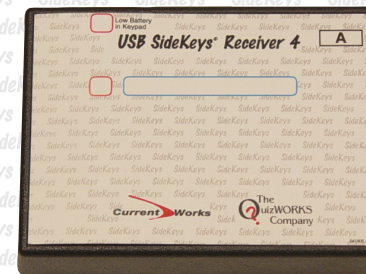


User's Guide  
for USB

# SideKeys® SideSlammers™

*Wireless Computer Input*



Simple, Powerful Participation Tools

Mailing address:

P.O. Box 203  
Ringwood, IL 60072



Computer Tools For Whole Class Participation

Shipping address:

1395 Horizon Drive  
Johnsburg, IL 60051

Toll Free: 888-526-1200

Phone: 847-497-9650

Fax: 847-497-9680

[www.currentworks.com](http://www.currentworks.com)

[www.quizworks.com](http://www.quizworks.com)

**Current Works**

Simple, Powerful Participation Tools



Computer Tools For Whole Class Participation

## Guarantee

Your satisfaction is guaranteed! If this product does not meet all of your expectations, you may return it, for any reason, within the first year, for a complete money back guarantee.

## Sales & Service

To order additional Inserts, Transmitters or SideKeys compatible software.

**International Customers:**

Contact your Sales/Customer Service Representatives from where you purchased the product

**Manufacturer:**

**Call toll free: 1-888-526-1200 USA only**

**1-847-497-9650 Outside USA**

**or E-mail us at: [info@currentworksinc.com](mailto:info@currentworksinc.com)**

**[info@quizworks.com](mailto:info@quizworks.com)**

**[www.currentworks.com](http://www.currentworks.com)**

**[www.quizworks.com](http://www.quizworks.com)**

## Declaration of Conformity

### **The EU Directives covered by this Declaration:**

Radio & Telecommunications Terminal Equipment Directive, 1999/5/EC

### **The Basis Upon Which Conformity Is Being Declared:**

The products identified above comply with the requirements of the above EU directives by meeting the following standards:

ETSI EN 301 489-01 V1.4.1 (2002-08)  
ETSI EN 301 489-03 V1.4.1 (2002-08)  
ETSI EN 300 220-1 V1.3.1 (2000-09)  
ETSI EN 300 220-2 V1.3.1 (2000-09)  
ETSI EN 300 220-3 V1.1.1 (2000-09)  
CENELEC EN 50371: 2002

The Products Covered by this Declaration

*SideKeys® Wireless Radio-Frequency Audience Response System for computers Keypads are Product # SK0433TX and USB Receiver is # IUSB-SK/REC for only units that are labeled CE certified on receiver & transmitter back labels.*

### **Manufacturer:**

Current Works, Inc.  
1395 Horizon Drive  
Johnsburg IL 60051 USA

### **Signature**

I, the undersigned, hereby declare that the equipment specified above conforms to the above Directives and Standards. The CE mark was first applied in: 2004

Robert L Schroyer Date: October 25, 2004

Robert L Schroyer, President, Current Works, Inc. Johnsburg, IL 60051 USA

### **ATTENTION!**

The attention of the specifier, purchaser, installer, or user is drawn to special measures and limitations to use, which must be observed when the product is taken into service to maintain compliance with the above directives. Details of these special methods and limitations to use are available on request, and are also contained in the product manual. **The USB cable that connects the computer to the SideKeys® Receiver must be shielded and cannot be more than 3 meters in length.**

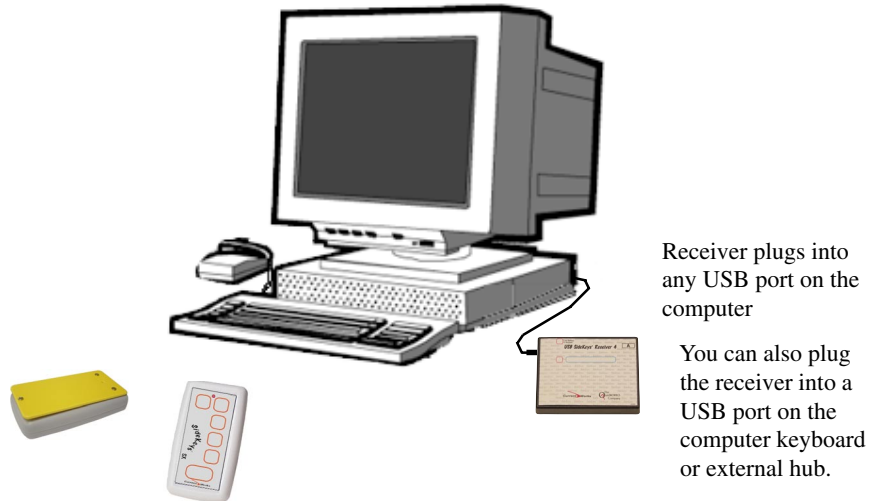
## **Contents**

Guarantee.....	2
Sale & Service.....	2
Contents.....	3
SideKeys.....	4
Features of Transmitters.....	4
Installation of Receiver.....	5
Set-Up of Transmitters.....	6
Pre-Set Transmitters.....	6
Lettering.....	6
Transmitters defined to the Receiver.....	7
Lockout Function.....	8
Low Battery.....	8
Storage.....	8
Cleaning.....	9
Troubleshooting.....	9
Swap.....	10
How Swap Works.....	11
How to Create a Swap Presentation.....	12
Setup Procedure for Swap.....	13
Important SideKeys Information.....	14
PowerPoint keyboard shortcuts.....	15
Conclusion.....	15
Warranty and Repair.....	16
FCC information.....	17
Declaration of Conformity.....	18

SideKeys®

# SideKeys

SideKeys is a unique product that allows several teams to use a single computer simultaneously. These wireless transmitters send keystrokes to the computer from anywhere in the classroom. Radio frequency technology allows SideKeys to operate without line-of-sight requirements.



Receiver plugs into any USB port on the computer

You can also plug the receiver into a USB port on the computer keyboard or external hub.

## The Features of Your SideKeys

- Transmitters can simultaneously input to one computer
- There are 6 independent keys on each SideKeys keypad
- Transmitters have a range of up to 100 feet
- Receiver works on USB operating systems of your computer
- No software to install, plug one cable into your computer
- Receiver displays when a keypad has low battery
- Transmitters have low battery indication
- Leader keypad has control functions for the software

Current Works makes no warranties, expressed or implied, including warranties as to the merchantability or fitness for a particular use and shall not be liable for any losses or damage incurred, whether directly or indirectly, arising from the use of its products. Neither the customer, its dealers, or agents have any right to make any other representation, warranty, or promise with respect to the product.

## FCC Compliance

Note: This equipment has been tested and found to comply with the limits for a Class B digital device, a TV interface device, and a low power transmitter, pursuant to Part 15 of the FCC Rules. These limits are designed to provide reasonable protection against harmful interference in a residential installation. This equipment generates, uses and can radiate radio frequency energy and, if not installed and used in accordance with the instructions may cause harmful interference to radio communications. However, there is no guarantee that interference will not occur in a particular installation. If this equipment does cause harmful interference to radio or television reception, which can be determined by turning the equipment off and on, the user is encouraged to try to correct the interference by one or more of the following measures:

- Reorient or relocate the receiving unit.
- Increase the separation between the equipment and the receiver.
- Connect the equipment into an outlet on a circuit different from that to which the receiver is connected.
- Consult the dealer or an experienced radio/TV technician for help.
- A shielded cable must be used when connecting a peripheral to the parallel or serial ports. The printer cable must have metal connector shells.

Changes or modifications to this equipment by other than an authorized service technician could void authorization to use this equipment

FCC ID: LYN20TX      Canada: IC-4101A-104513A      US Patent No: 6,571,299 B1

This device complies with Part 15 of the FCC Rules. Operation is subject to the following two conditions: (1) This device may not cause harmful interference, and (2) this device must accept any interference received, including interference that may cause undesired operation.

© Copyright 2007 Current Works, Incorporated. All rights reserved SideKeys is a trademark of Current Works, Incorporated. Macintosh is a registered trademark of Apple Computer, Inc.

## Warranty or Repair Service

SideKeys products are warranted against manufacturing defects for **one (1) year** from the date of invoice. Warranty service covers materials and labor for the repair or replacement of your product. Problems caused by abuse, mishandling, improper installation, or improper storage are not covered by warranty. Any modification or repair attempt by the customer will invalidate the warranty.

We suggest you contact us at **888-526-1200** about any difficulties you may experience with SideKeys. We may be able to solve your problem quickly. If the product still needs to be returned for warranty or repair service, Customer Service will give you a **Return Authorization number (RA#)**. Ship the product under prepaid postage to:

Current Works, Inc./QuizWorks  
Attn: Repairs  
1395 Horizon Drive  
Johnsburg, IL 60051

Please include with it:

- the **“RA” Number** given to you by **Customer Service**
- a brief **description** of the problem
- your **return address**
- a **day-time phone** number or e-mail address
- a **proof of date of purchase** such as product registration card (on file @ CWI), a photocopy of the packing slip, invoice, purchase order or canceled check.

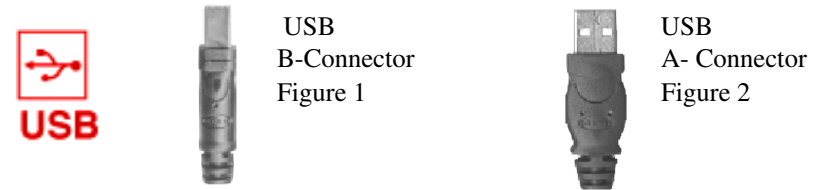
If it is a non-warranty repair over \$25, we will contact you with a cost estimate for your **“Approval to Repair”** paid with VISA, MASTERCARD, otherwise, we will repair the product and return it with an invoice.

When repair service is required, ship the product to us under prepaid postage, whatever way is convenient for you. Our goal is to return ship the product within 48 hours of receiving it, or within 48 hours of the **“Approval to Repair”**, if necessary.

## Installation of Receiver

Use any open USB port on your computer. You can also attach the USB SideKeys Receiver to a USB hub. No special software needs to be loaded and no external power is needed to operate the interface.

1. Connect the USB-B connector (Figure-1) of the USB cable into the port on the USB Sidekeys Receiver.
2. Connect the USB-A connector (Figure-2) of the USB cable into the USB port of the computer or one open port of a USB hub, keyboard or other.



3. The first time the USB SideKeys Receiver is used in **2000, XP, and Vista the drivers needed should automatically be installed.**
4. When the USB Receiver is properly installed, one red LED on the receiver will be lit.

## Set Up of Transmitters

Install one, 9-volt alkaline battery in the rear battery case of each transmitter. The battery must be installed with proper polarity. See icon inside of the battery case. Depending on which bundle was purchased, the batteries may be stored in the battery compartment, in this case pull out the plastic battery isolator label.

## Pre-Set Transmitters

If you purchased SideKeys/SideSlammers bundled with a specific software program, the transmitters are preset to match that software. Just install the SideKeys Receiver and the bundled software on your computer and begin.

## Lettering

The transmitters are numbered (see the front end of the transmitter) and defined to a specific receiver. For any specific application Keypad "letter" P(PC) or M(MAC) is used as the Leader's or Instructor's keypad. The transmitter #1 is used for Player or Team #1, transmitter #2 is used for Player or Team # 2, etc. If a Leader's Keypad was included in the set of SideKeys, the insert will need to be changed to match the software application..

---

## *PowerPoint® keyboard shortcuts:*

To do this	Keystroke equivalents
Black/unblack screen	b, .(period)
White/unwhite screen	w, ,(coma)
show/hide pointer	a, =
erase screen annotations	e
advance on mouse click	m
advance to hidden slide	h
advance to next slide	n
return to previous slide	p

## *Conclusion:*

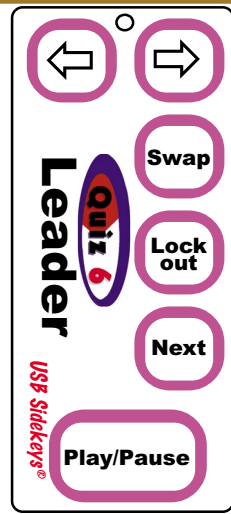
Current Works provides this Guide as another tool to support your successful presentations. We believe that active participation increases learning and that both participants and the trainer benefit from effective training tools.

Please let us know how these tools work for you and contact us about any concerns, questions or ideas you have for us.

Bob Schroyer, President  
Current Works, Inc.  
1-888-526-1200  
info@currentworksinc.com

## “SWAP” setup (cont.)

- 8) The Leader’s SideKeys remote controller can run the Power Point Slide Show forward and backwards with the arrow buttons, as well as Pausing the Quiz as needed. With the USB SideKeys receiver the Leader has a lock out function as well. While presenting the leader may choose to lock out participants’ keypads to avoid any chances of inadvertent key events.



SideKeys Insert for the Leader’s keypad

## Important SIDEKEYS® information:

SideKeys keypads send keystrokes to the computer. PowerPoint and other participation software use keystrokes to perform a variety of functions. Be aware that participants may press the SideKeys keypads and send keystrokes during your presentation.

### What to do.....

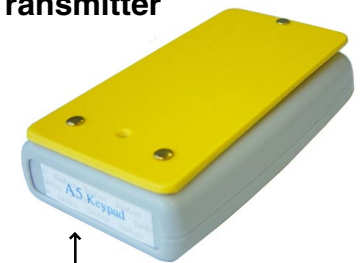
- Give the participants guidelines before your presentation, (please do not handle the keypads during the PowerPoint presentation)
- Know your presentation software key equivalents and the actions that take place, so you can undo it quickly.
- Upgrade to USB SideKeys Receiver to enable the Lock out function.

## Transmitters Defined to the Receiver

This set of SideKeys includes the USB Receiver, which is connected directly to the computer, and several transmitters, whose ID numbers are defined in the memory of this specific Receiver.

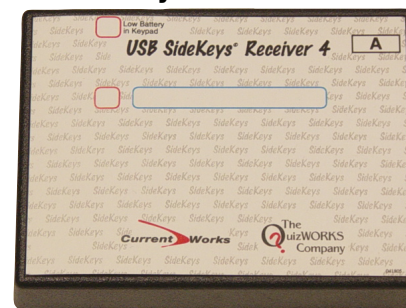
Each transmitter has a unique ID # and the Receiver only responds to those transmitter that are actually programmed to interact with that Receiver. This allows Instructors to utilize these wireless radio frequency transmitters within close proximity to other SideKeys systems without having interference between the systems. This also means that **the User must always maintain the transmitters with their assigned Receiver. You can not interchange the transmitters between two or more SideKeys systems.** If you purchase additional SideKeys systems that will be used in the same facility, we will configure the new systems so that they do not conflict with your existing SideKeys. The transmitter will be "Defined" to work with the Receiver before they leave the factory. USB SideKeys systems have an alphabetical letter(A, B, C... or A-B, C-D, E-F...) on the label of each component, to identify the system. We encourage the users to use such labeling schemes to keep the systems clearly separated.

### SideSlammer™ Transmitter



Transmitters are labeled with a letter and a number from 1 thru 30 and they must match the letter on the receiver for them to function.

### SideKeys Receiver



## Lockout Function

The lockout function available with this USB SideKeys system allows the Leader to lockout all other transmitters, except the Leader's wireless keypad. This function is useful to control random input to the computer from participants who push buttons on their transmitters. This is especially valuable if you Swap to applications (like PowerPoint) where a certain keystroke input can disrupt your presentation.



The lockout function can be turned "on" and back "off" again from the Leader's keypad. When the lockout function is "on" the red LED on the receiver flashes and only the Leader's keypad will be operational. A single touch of the "Lockout" button on the Leader's keypad turns the LED to continuous glow, and restores the functionality of all SideKeys.

## Low Battery

On the top of the transmitter, the clear hole has a red light called a LED. The LED has 3 settings:

No light = sleep mode, no/dead battery

Dim light = stand-by, low battery when key pressed

Bright light = good battery/transmitting signal

The transmitters have a low battery indication. When a battery becomes low, the transmitter will still function except the LED will not be bright. The 9-volt alkaline battery must be changed soon or the transmitter will stop functioning completely.

When used with a SideKeys Receiver 4, the Low Battery LED will light up for a second when it receives the signal from a transmitter with a low battery.

## Storage

Your SideKeys product is equipped with a sleep mode in order to preserve battery life. However, for long term storage (more than a month), you should remove the battery from the transmitters. Batteries can leak and damage equipment if left for long periods of time.

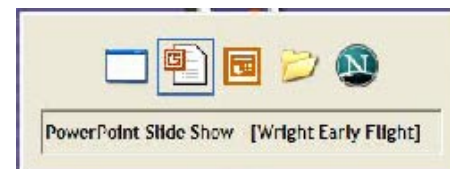
## Setup Procedure for "SWAP"



In order to use the remote controlled "Swap" function on your Personal Computer (this function does not work on Macintosh systems) you must setup the PowerPoint and participation software in a specific order. The following procedure will assure your success.

- 1) Close all other applications and launch the Participation software you plan to use.
- 2) Move through the setup of this application and Pause the activity just before the first question appears.
- 3) Minimize this participation software program.
- 4) Launch the PowerPoint or alternative application with which you plan to SWAP.
- 5) Get the PowerPoint into the Slideshow mode, or the alternative application to the point where you are ready to begin presenting.
- 6) Press & hold the 'alt' key on the keyboard. Do not release this key during this step, until told to do so. Press once and quickly release the 'tab' key on the keyboard. (keep that 'alt' key down)
- 7) A pop-up window showing all active folders and applications on your desktop will appear in a horizontal list of small icons. (keep that 'alt' key down)The second icon in this list will be highlighted with a description of that application shown in a text box below the icons.
- 8) Press and release the 'tab' key, again. With each press the of the 'tab' key the highlighter will step through the list of icons. When the Participation software application you want to SWAP with is highlighted, then release the 'alt' key. This will move that application to the left of all other applications in this list.
- 9) This procedure should put the two applications you wish to SWAP between as first & second in this horizontal list of "alt – tab" icons. The SWAP function only alternates between these two applications.

Both of these programs, **Power Point Slide Show** and the participation software must be set up in this manner for the applications to "Swap" properly.



## How to create a “SWAP” presentation

- First create your PowerPoint presentation .
- Identify the significant learning points presented on each slide.
- Create a question set that corresponds to each of these learning points. Keep the questions in sequence with the slide slow.
- Print out a copy of the questions in the created sequence. Note which questions are related to which slide.
- Create a chart to coordinate which questions to play after which slides are presented.
- Decide how many slides to cover, before swapping to the participation software. Note how many of the questions correspond to those slides presented.
- Plan your presentation and when you will “Swap” back and forth between the Slide Show and the questions. You can even add slides to indicate when to “Swap” and what questions to answer for example; “Swap to Answer questions 4-8.”

### Helpful Hints:

PowerPoint’s outline format is a wonderful tool for laying out the sequence of your questions.

You can copy text directly off of your PowerPoint presentation slides and paste it into the question field in the construction program. You can swap between the applications for this work.

For a short Slide Show presentation, you can wait to ask the question until the end of the presentation.

You can also play the entire participation software again at the end of the presentation, or at the start up of the next session as a refresher of what was already covered.

## Cleaning

SideKeys may be cleaned using a soft, clean cloth dampened with clean water or a plastic cleaner.

## Troubleshooting

Symptom	Problem	Solution
<b>Keypad</b> The red LED doesn’t turn on when a key is pressed.	Battery is dead or missing	Replace battery with a new 9-volt alkaline battery.
No signal received by the computer, but red LED light on the Transmitter is bright.	<ul style="list-style-type: none"> <li>• Receiver not installed correctly</li> <li>• Transmitter is too far away from the receiver</li> <li>• Radio frequency noise in the environment</li> <li>• Check for Lockout mode</li> <li>• Battery Power is low in the transmitter</li> <li>• Transmitter/Receiver is resting on a metal surface</li> </ul>	<ul style="list-style-type: none"> <li>-Be sure you are using Transmitter # and letter that matches receiver</li> <li>-Reinstall Receiver (see pg. 5)</li> <li>-Move closer to the computer</li> <li>-Move Receiver and/or computer to different location or orientation.</li> <li>-Press Lockout button on Leader’s remote</li> <li>-Replace battery with a new 9-volt alkaline battery</li> <li>-Move Transmitter/ Receiver off the metal surface</li> </ul>

---

# SWAP

## Introduction:

The **PowerPoint** presentation software has become the standard choice of trainers for introducing information to their audiences. This powerful tool and all of the available enhancement products enable the trainer to quickly customize a professional presentation with color, graphics, sounds and movies.

SideKeys works in combination with **PowerPoint** and various participation software to facilitate an extremely interactive presentation. The participation software supports the quick and easy creation of custom quizzes and survey questions and presents these quizzes in a fun, interactive format. The **SideKeys®** hardware provides wireless keypads to allow up to 60 participants to buzz-in and answer the questions. The Leader's SideKeys keypad allows for remote control of both the **PowerPoint** and the participation software. This provides immediate feedback to the participants and the Leader on how each participant/team is answering the questions.



**“SWAP”** is our term for switching between two active applications on the computer. This “Swap” function allows the leader to have the **PowerPoint slide show** application actively presenting the information to the participants. At the same time the participation software is also active on the same computer, but hidden in the background. The trainer uses the **SideKeys** wireless keypad to click through the slide show, then, at the touch of a different button on the same keypad “Swap” over to the participation software, hiding the Slide Show in the background. Other buttons on this remote keypad allows the trainer to remotely control this participation software.

---

## How “SWAP” works:



When these two products, **PowerPoint** and the **participation software**, are combined via the “Swap” function, they yield a dynamic interactive process of presentation and corresponding participation activity. The typical process involves the presentation of a few slides and then “Swap” over to a short set of questions directly related to these slides. Quickly get participants actively working in teams, answering questions, and see how well the participants understand the important points just presented. Then, “Swap” back to the slide show where you can go back and review any slides that require more discussion, or go on with the presentation, with the confidence that the audience comprehends your message.

This process changes the attentiveness of the audience during the presentation of the slides. It also engages the participants in active discussions and helps to integrate the information through the interactive process. These dynamics reassure the trainer of comprehension, reinforce the learning and increase retention.

This Guide is intended to help you structure your presentation, and the questions, and to take full advantage of the “Swap” between **PowerPoint** and the participation software.